

RPGA DEVELOPMENT PLAN

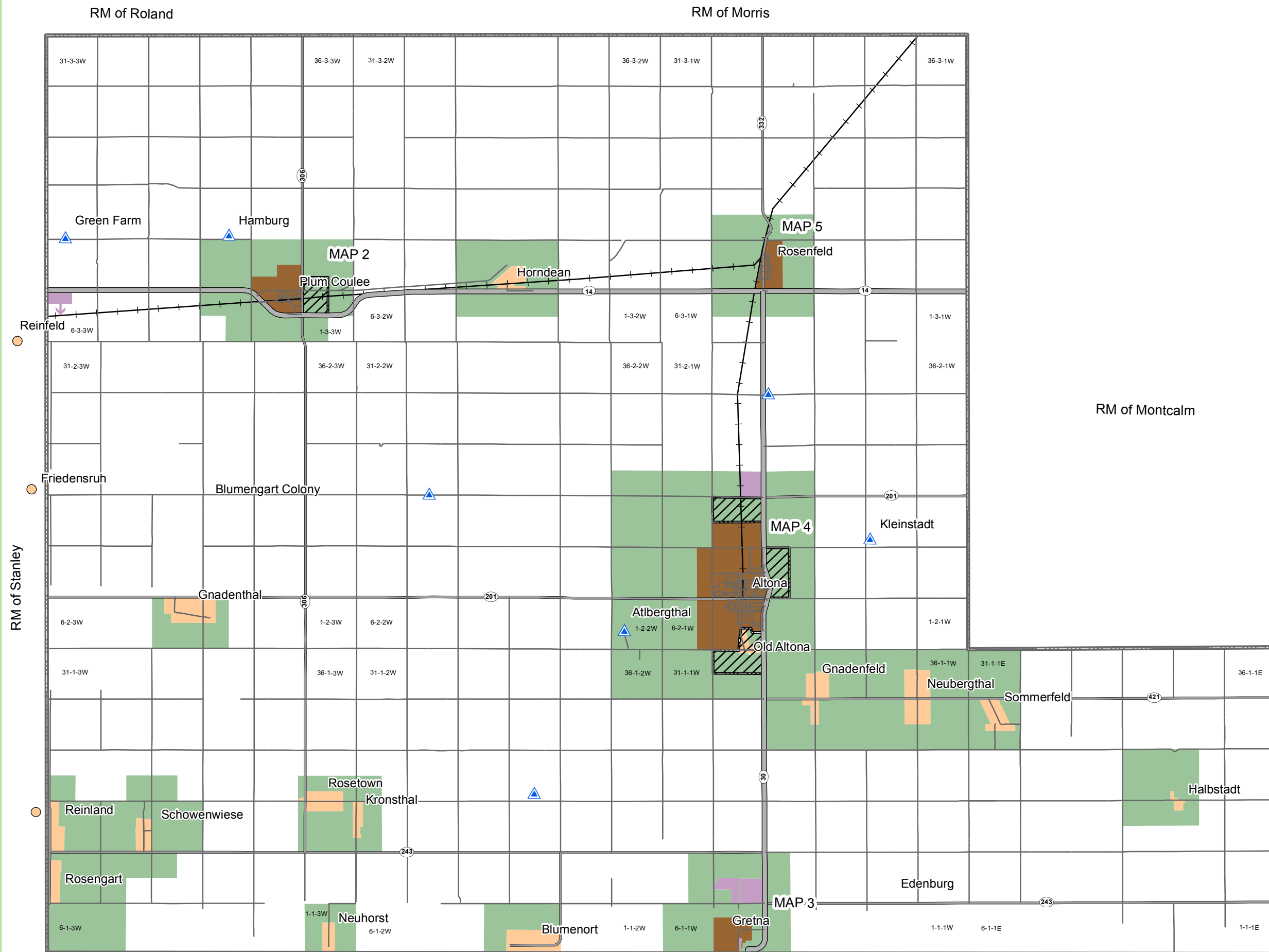
RM OF RHINELAND

Designations

- General Agricultural
- Restricted Agricultural
- Agro-Industrial
- Village Living
- Town Living
- Fringe

Additional References

- Municipal Boundary
- Provincial Trunk Highway
- Provincial Road
- Municipal Roads
- Rail
- Country Living Clusters (Detailed on Map 6)
- Future Growth Direction
- Neighbouring Developed Locations



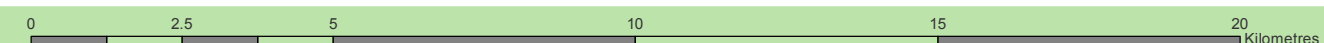
RM of Stanley

RM of Roland

RM of Morris

RM of Montcalm

United States of America

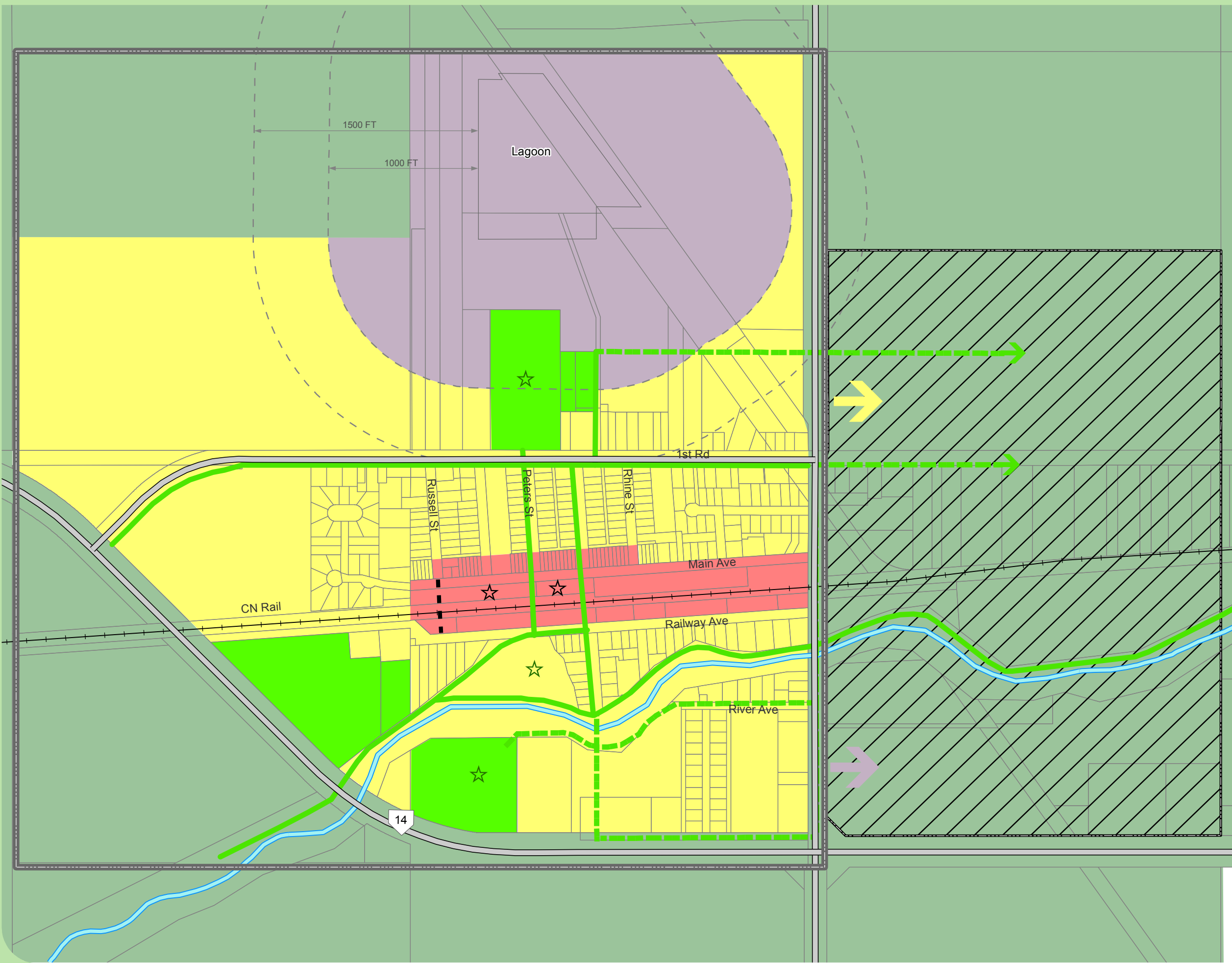


Projection: UTM NAD 83 Zone 14
 Data Sources
 Manitoba Land Initiative
<http://ml2.gov.mb.ca>
 G:\GIS\103366\Tier_2\Rhineland_Tier_2.mxd



RPGA DEVELOPMENT PLAN

TOWN OF PLUM COULEE



Designations

- General Agricultural
- Restricted Agricultural
- Neighbourhood
- Downtown
- Recreation & Institution
- Industrial
- Fringe

Additional References

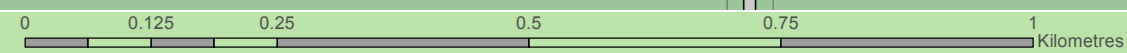
- Community Focal Point
- Recreational Node
- Trails
- Future Trails
- Lot Lines
- Rail
- Stream / Drain
- Municipal Boundary
- Future Growth Direction
- Future Road



Disclaimer:
Lagoon boundaries are approximate and planned transportation networks are conceptual. Lagoon boundaries and transportation networks do not form part of the Development Plan and are included for reference only.

Projection: UTM NAD 83 Zone 14

Data Sources
Manitoba Land Initiative
<http://ml2.gov.mb.ca>
G:\GIS\103366\Final_Report\Map2_Plum_Coulee.mxd



RPGA DEVELOPMENT PLAN

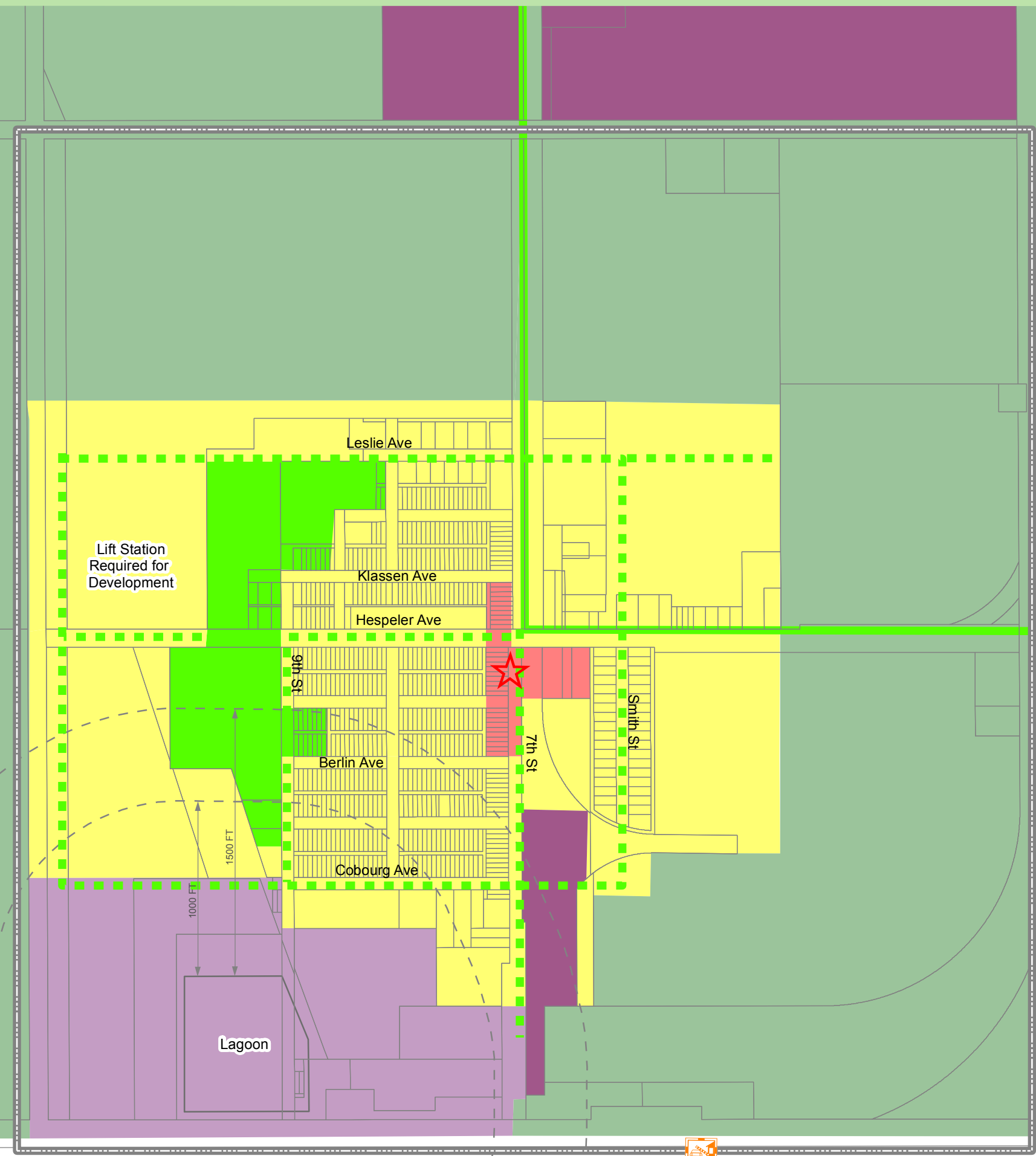
TOWN OF GRETNA

Designations

- Restricted Agricultural
- Agro-Industrial
- Neighbourhood
- Downtown
- Recreation & Institution
- Industrial

Additional References

- Trans Canada Trail
- Proposed Trails
- Municipal Boundary
- Lot Lines
- Downtown



Disclaimer:
 Lagoon boundaries are approximate and planned transportation networks are conceptual. Lagoon boundaries and transportation networks do not form part of the Development Plan and are included for reference only.

Projection: UTM NAD 83 Zone 14

Data Sources
 Manitoba Land Initiative
<http://mli2.gov.mb.ca>

G:\GIS\103366\Final_Report\Map3_Gretna.mxd



Canada USA Border

International Border Crossing

Lift Station
 Required for
 Development

Lagoon

1000 FT

1500 FT

PTH 30

Leslie Ave

Klassen Ave

Hespeler Ave

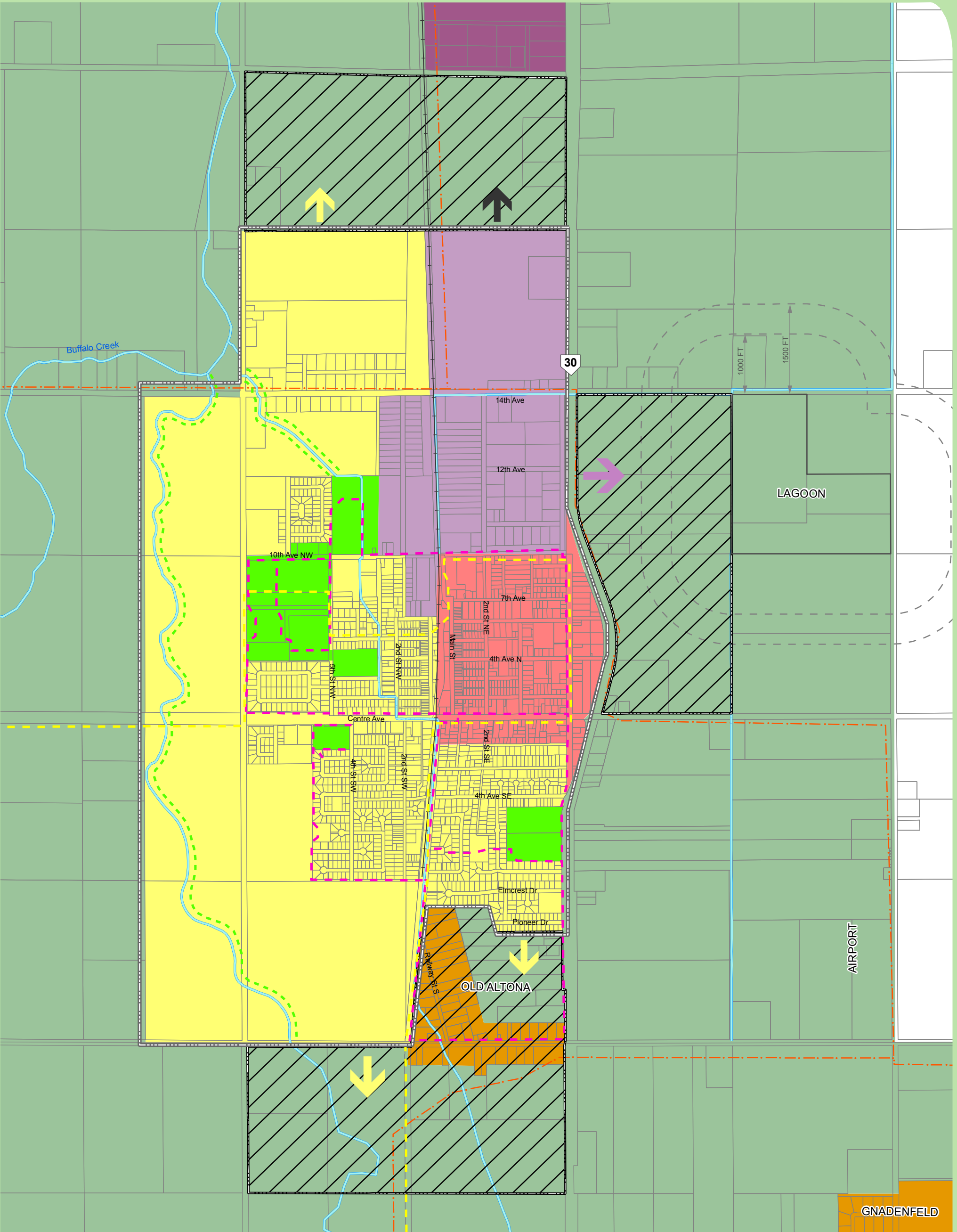
9th St

Berlin Ave

Cobourg Ave

7th St

Smith St



RPGA DEVELOPMENT PLAN

**TOWN OF
ALTONA**

Designations

- General Agricultural
- Restricted Agricultural
- Agro-Industrial
- Neighbourhood
- Downtown
- Recreation & Institution
- Industrial
- Fringe
- Village Living

Additional Features

- Walking Trails
- Proposed Walking Trails
- Trans Canada Trail
- Snowmobile Trails
- Stream / Drain
- Lot Lines
- Rail
- Municipal Boundary
- Future Growth Direction



Projection: UTM NAD83 Zone 14
 Data Sources:
 Manitoba Land Initiative Web Site
<http://ml2.gov.mb.ca>
 G:\GIS\103366\Final_Report\Map4_Altona.mxd



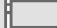
Disclaimer:
 Lagoon boundaries are approximate and planned transportation networks are conceptual. Lagoon boundaries and transportation networks do not form part of the Development Plan and are included for reference only.



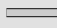

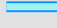
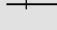
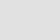
RPGA DEVELOPMENT PLAN

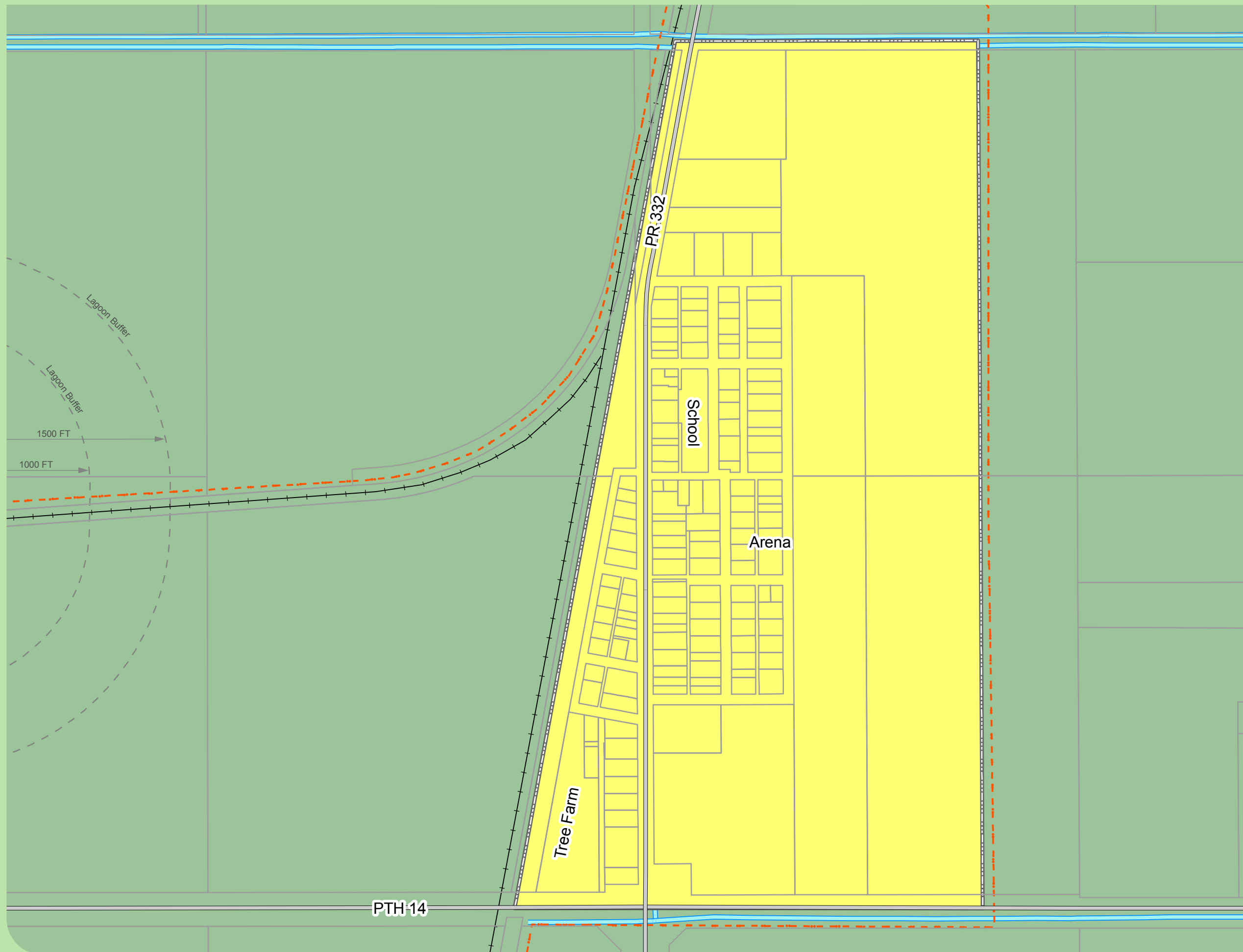
LUD OF ROSENFELD

Designations

-  Restricted Agricultural
-  Neighbourhood
-  LUD Boundary

Additional References

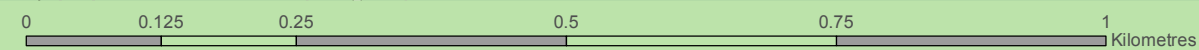
-  Major Roads
-  SnowMobile Trails
-  Stream / Drain
-  Rail
-  Lot Lines



Disclaimer:
 Lagoon boundaries are approximate and planned transportation networks are conceptual. Lagoon boundaries and transportation networks do not form part of the Development Plan and are included for reference only.

Projection: UTM NAD83 Zone 14

Data Sources
 Cadastral data provided by: Manitoba Land Initiative
<http://ml2.gov.mb.ca>
 G:\GIS\103366\Final_Report\Map5_Rosenfeld.mxd



RPGA DEVELOPMENT PLAN

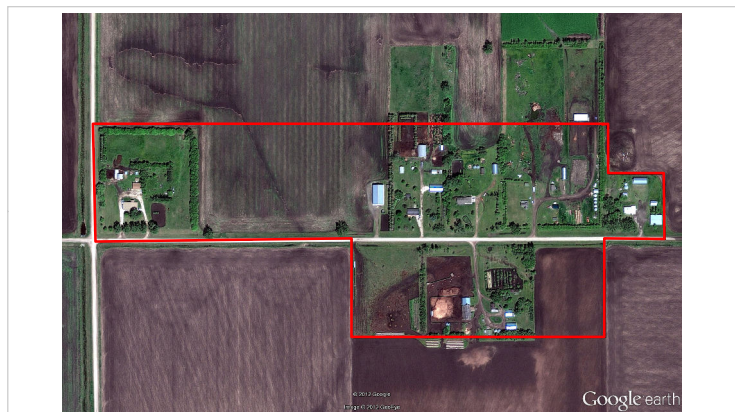
COUNTRY LIVING CLUSTERS

Legend

Country Living Cluster Boundary

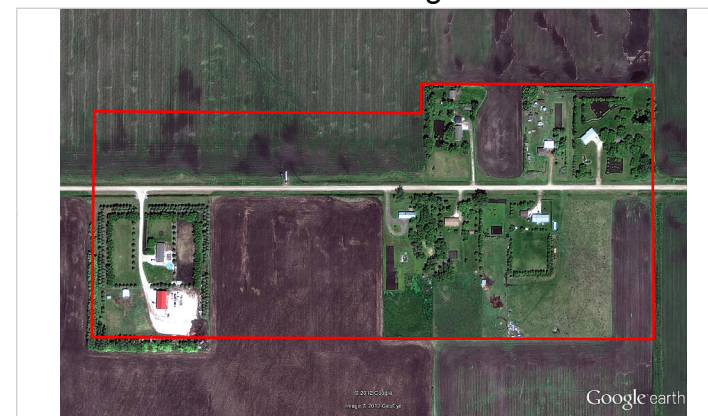


Greenfarm



Pt NW 7-3-3W
Pt SW 18-3-3W
Pt SE 18-3-3W

Hamburg



Pt S1/2 10-3-3W
Pt N1/2 15-3-3W

Altbergtal



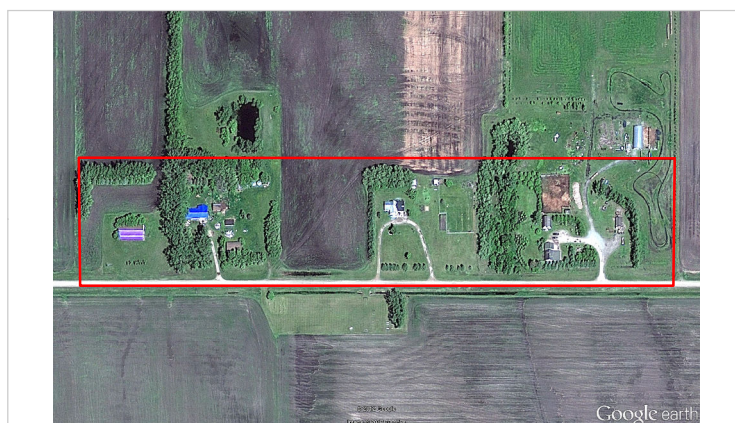
Pt SW 1-2-2W

Thames Road



Pt NE 17-2-2W
Pt SW 20-2-2W
Pt SE 20-2-2W

North of Blumenort



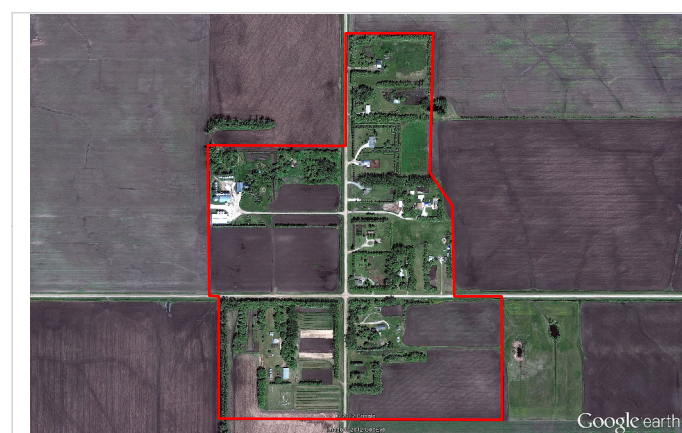
Pt SE 22-1-2W
Pt SW 22-1-2W

Roseville Road



Pt NW 28-2-1W

Kleinstadt




Pt NE 10-2-1W
Pt SE 15-2-1W
Pt NW 11-2-1W
Pt SW 14-2-1W

RPGA DEVELOPMENT PLAN

SETTLEMENT AREA: SOMMERFELD

Legend

- Lot Lines
-  Village Living
-  General Agricultural Area
-  Restricted Agricultural Area



Scale: 1:8,000
Projection UTM Zone 14 NAD83

Data Sources:
Cadastral Data: Manitoba Land Initiative Web Site
<http://mli2.gov.mb.ca>
Existing Development Plan: RM of Rhineland
Aerial Image: Google Earth, Image taken 2005



RPGA DEVELOPMENT PLAN

SETTLEMENT AREA: SCHOWENWIESE

Legend

- Lot Lines
- ▭ Village Living
- ▭ Restricted Agricultural Area
- ▨ Subject to Flooding



Scale: 1:5,000
Projection UTM Zone 14 NAD83

Data Sources:
Cadastral Data: Manitoba Land Initiative Web Site
<http://mli2.gov.mb.ca>
Existing Development Plan: RM of Rhineland
Aerial Image: Google Earth, Image taken 2006




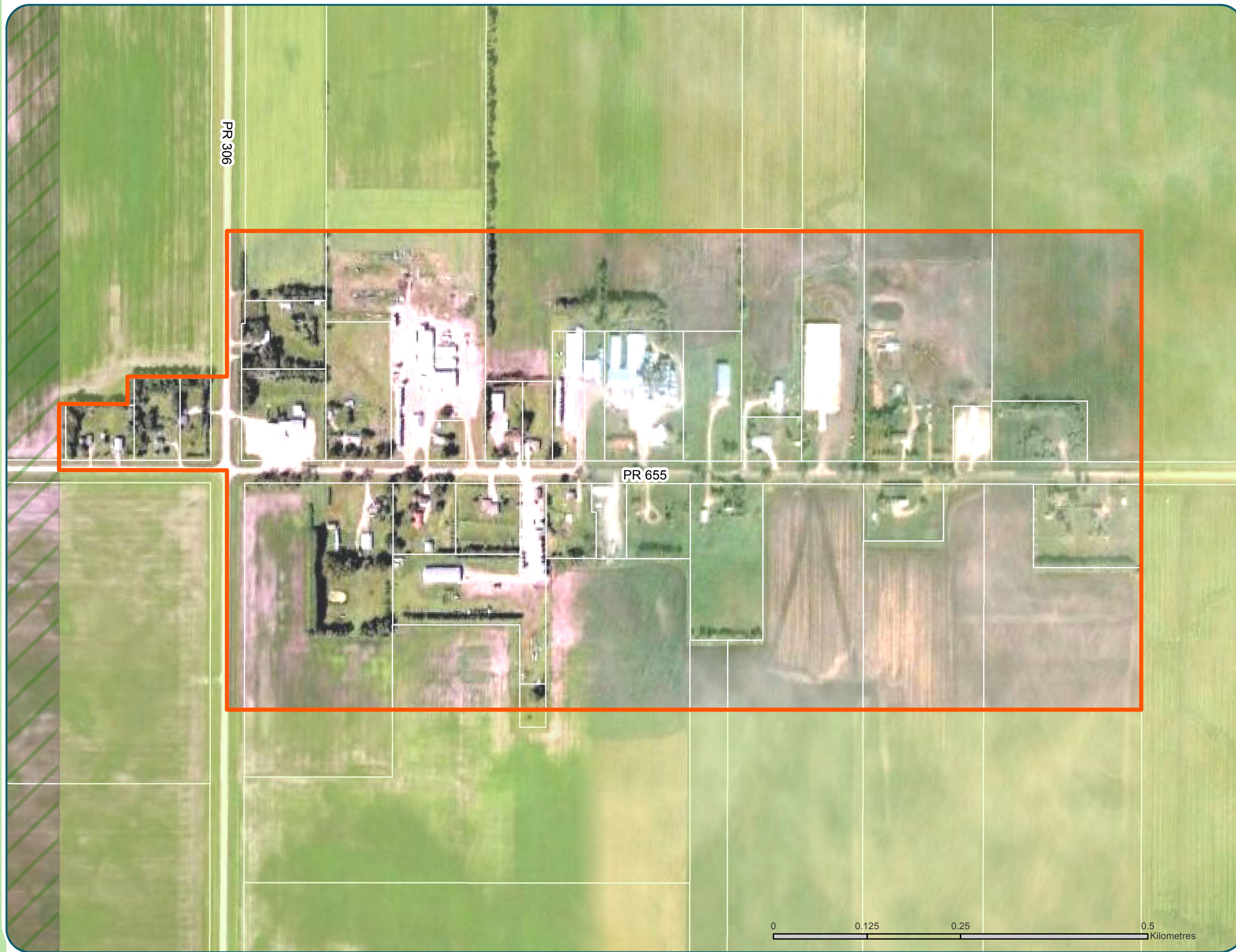
RPGA DEVELOPMENT PLAN

SETTLEMENT AREA:

ROSETOWN

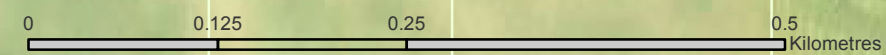
Legend

- Lot Lines
-  Country Living Established
-  General Agricultural Area
-  Restricted Agricultural Area



Scale: 1:5,000
Projection UTM Zone 14 NAD83

Data Sources:
Cadastral Data: Manitoba Land Initiative Web Site
<http://mli2.gov.mb.ca>
Existing Development Plan: RM of Rhineland
Aerial Image: Google Earth, Image taken 2009



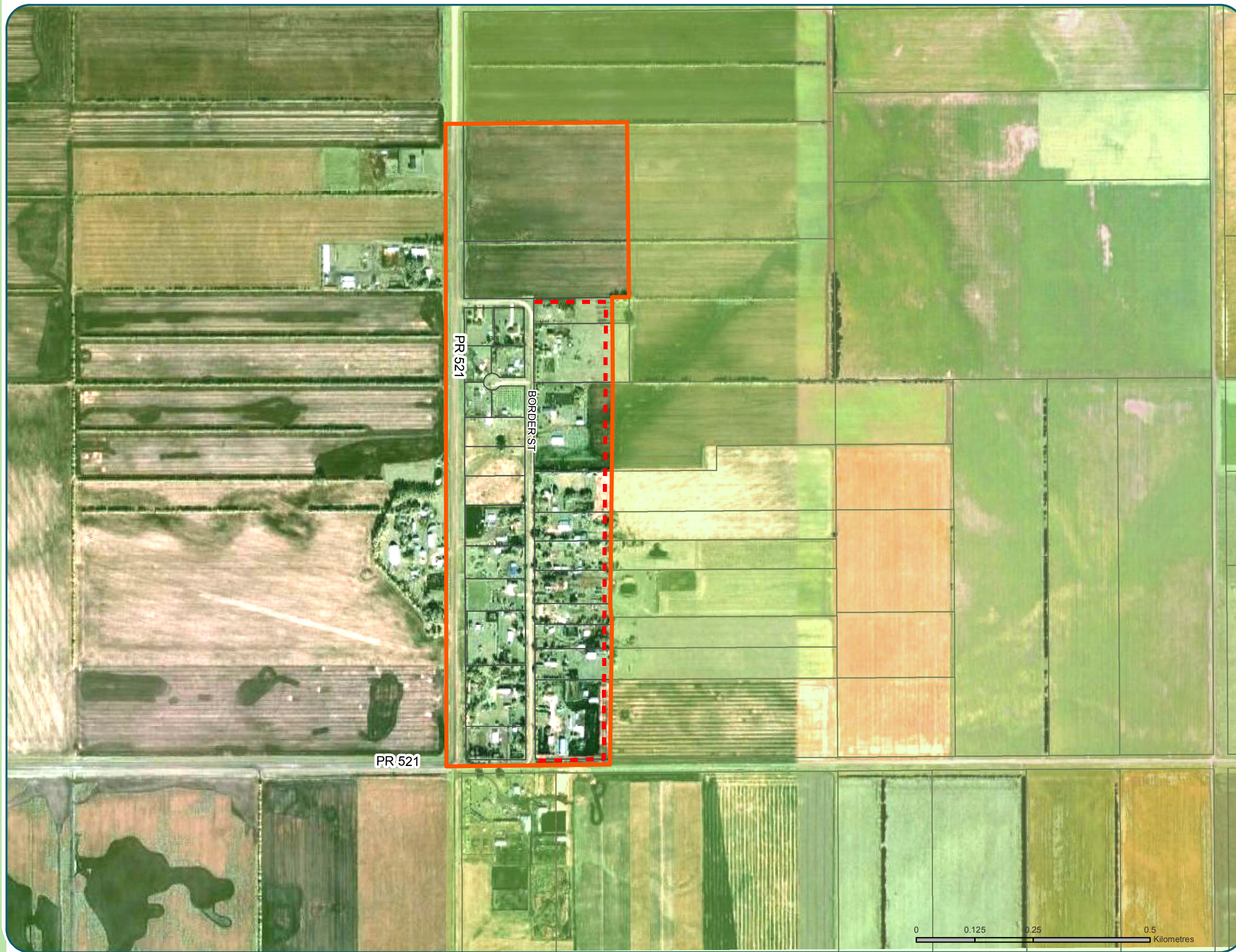
RPGA DEVELOPMENT PLAN

SETTLEMENT AREA:

ROSENGART

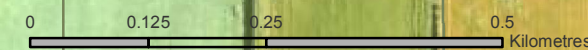
Legend

- Lot Lines
- - - Future Roadway
- ▭ Village Living
- ▭ Restricted Agricultural Area



Scale: 1:5,000
Projection UTM Zone 14 NAD83

Data Sources:
Cadastral Data: Manitoba Land Initiative Web Site
<http://mli2.gov.mb.ca>
Existing Development Plan: RM of Rhineland
Aerial Image: Google Earth, Image taken 2006



RPGA DEVELOPMENT PLAN

SETTLEMENT AREA:

REINLAND

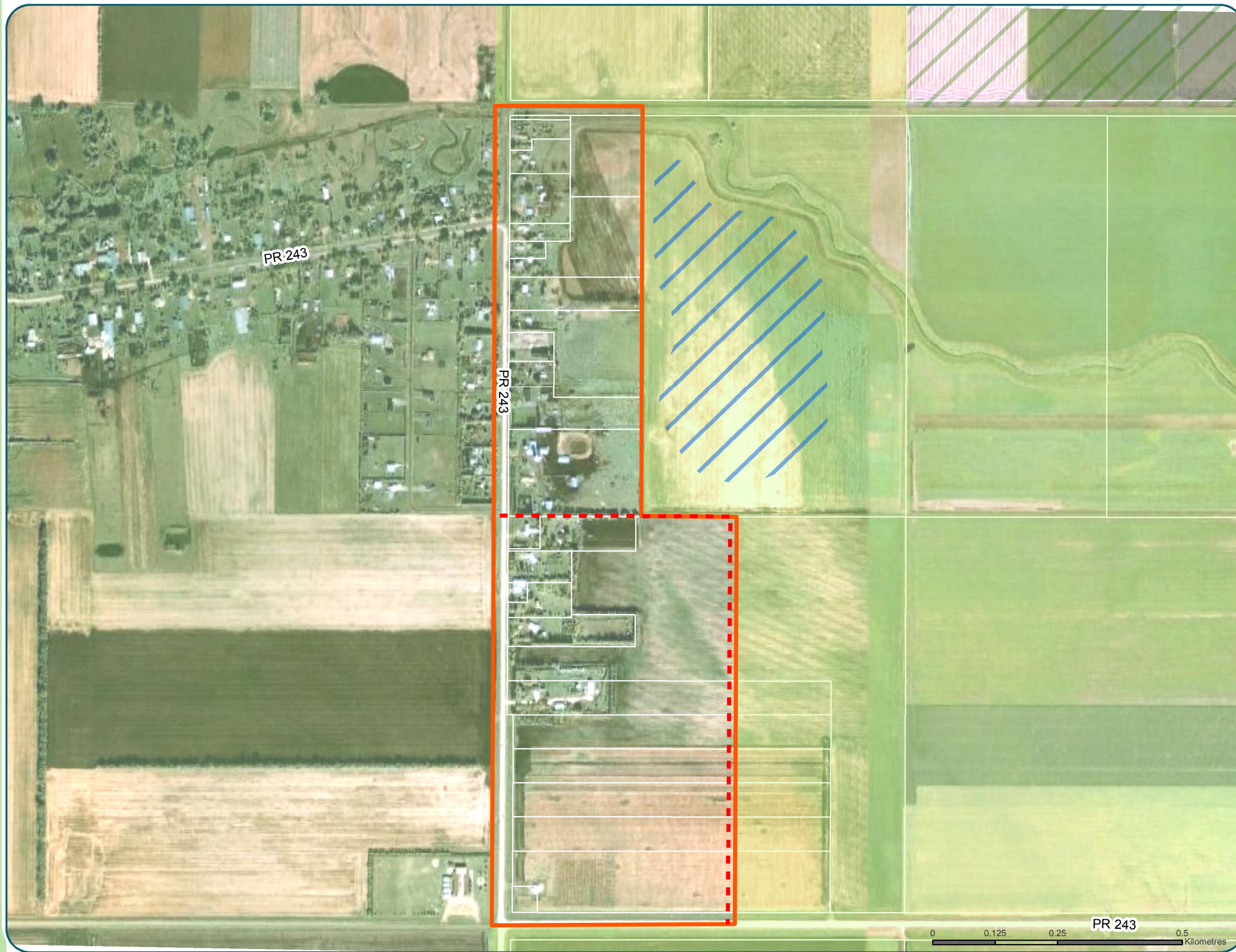
Legend

- Lot Lines
-  Village Living
-  Restricted Agricultural Area
-  General Agricultural Area
-  Future Roadway
-  Subject To Flooding



Scale: 1:7,500
Projection UTM Zone 14 NAD83

Data Sources:
Cadastral Data: Manitoba Land Initiative Web Site
<http://mli2.gov.mb.ca>
Existing Development Plan: RM of Rhineland
Aerial Image: Google Earth, Image taken 2006



RM of Roland

RM of Morris

RPGA DEVELOPMENT PLAN

RPGA Infrastructure Plan

Legend

Regional

- 1 Wastewater Plan
- 2 Solid Waste Plan
- 3 Maintain/Enhance Trail

Rhineland

- 4 Upgrade PR 306, 332
- 5 Upgrade PR 201 to RTAC

Plum Coulee

- 6 Lift Station Required for Development
- 7 Upgrade Water Reservoir and Pumps
- 8 Loop Trunk and Feeder Mains

Gretna

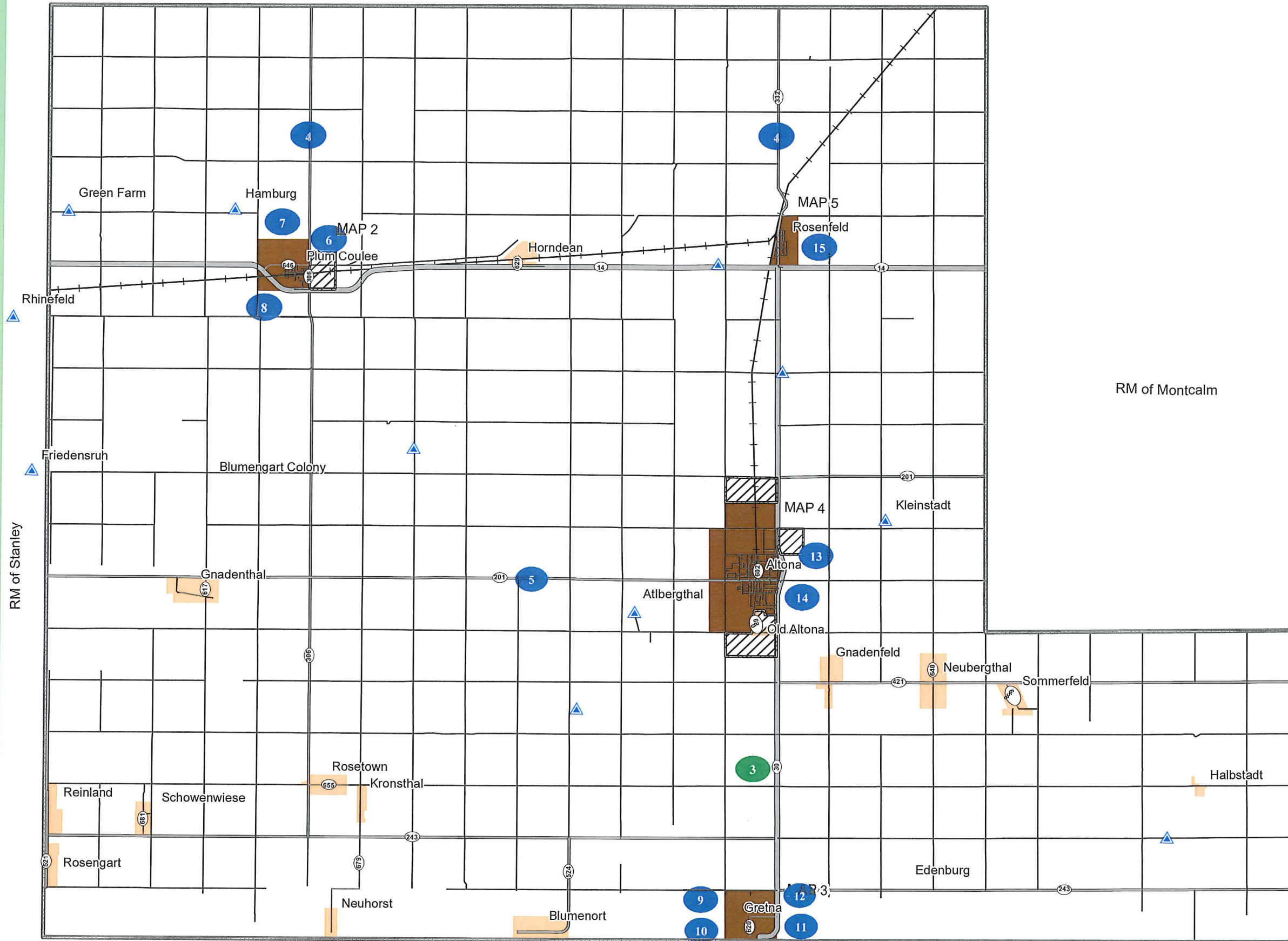
- 9 Loop Water Pipes
- 10 Upgrade Water Pipes
- 11 Install Water Meter at Reservoir
- 12 Assess Reservoir Capacity for Fire Protection and Growth

Altona

- 13 Increase Wastewater Capacity
- 14 Increase Water Capacity

Rosenfeld

- 15 Ensure Fire Equipment and Flow Capacity are Appropriate



RM of Montcalm

RM of Stanley

United States of America



Projection: UTM NAD 83 Zone 14
 Data Sources
 Manitoba Land Initiative
<http://ml2.gov.mb.ca>

